



Lidschatten- Varianten

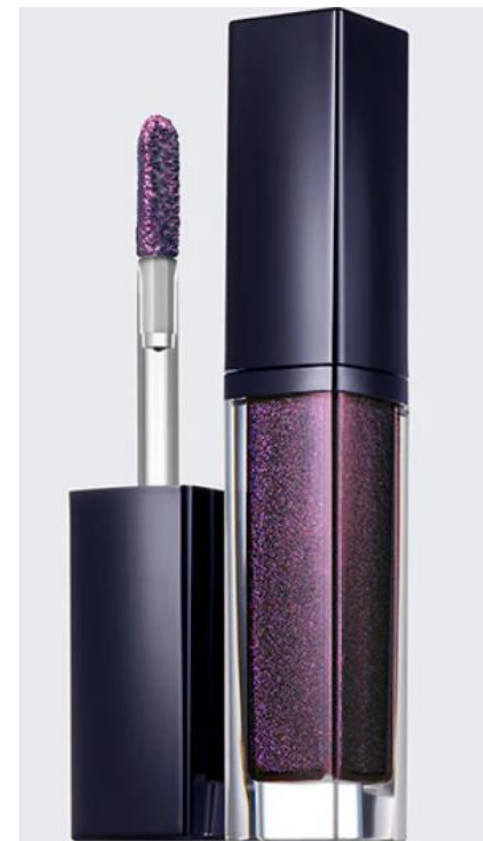
- Glitzernde Puderlidschatten
- Cremelidschatten
- Lidschatten Liquids
- Glitzerpigmente

A close-up photograph of a person's eye, heavily adorned with shimmering, golden-brown eyeshadow. The eye is looking downwards, and the eyelashes are dark and thick. The background is a soft, out-of-focus bokeh of warm, golden light. A dark grey rectangular box with a thin white border is positioned at the bottom of the image, containing the text 'Glanzlidschatten' in white, bold, sans-serif font, underlined.

Glanzlidschatten



Cremelidschatten |



Liquid Eyeshadows



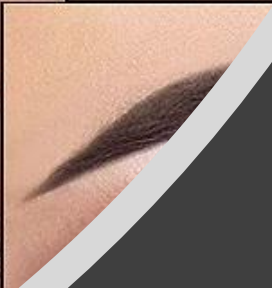
Liquid Eyeshadow



Lidschattenpigmente

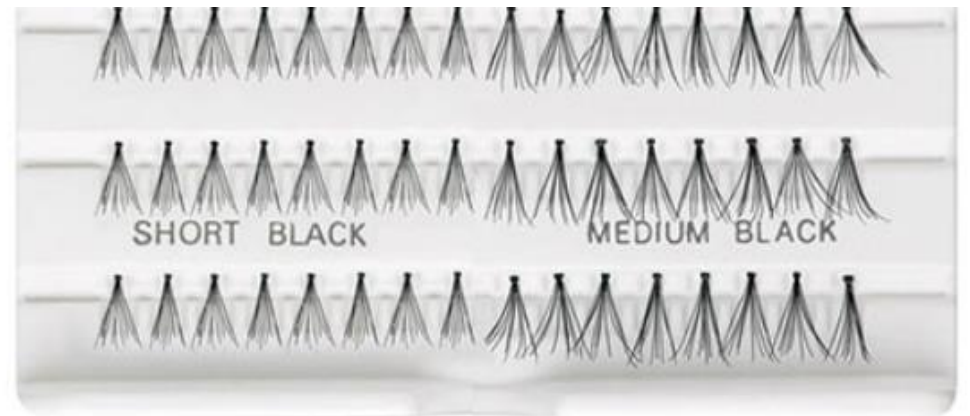
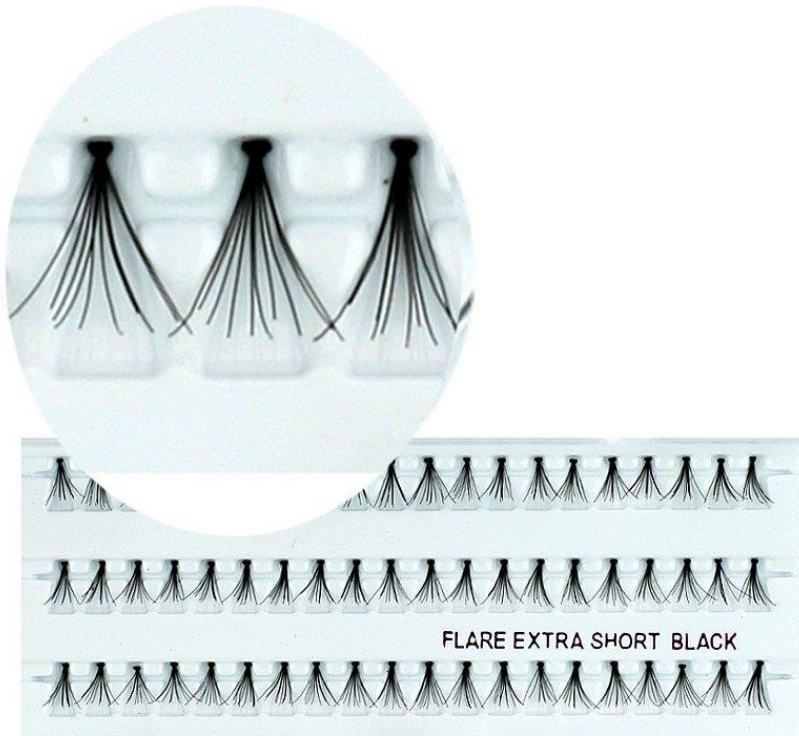


**Lidschatten-
pigmente**



Glitzer- Eyeliner

Einzelwimpern





- Immer in ungerade Anzahl kleben
- „Schmetterlingseffekt“
- Erst kleben, dann tuschen
- Mit einer kleinen Schere „anschrägen“



Bandwimpern





- Band zurecht schneiden

- Erst Naturwipmern tuschen, dann kleben

- vor dem Ankleben, ca. 10 sek. Warten

- gut andrücken



Xmas-
Makeup